

two things
where IGS
"leads the
pack"

IGS Technical Note

IGS leads the pack in many ways. Shown below are just two examples of these. Note that both are in every-day use by IGS.

www.insitu.com.au

Mark Chapman
mark@insitu.com.au
0437-824-776

Michael (Mick) O'Rourke
mick@insitu.com.au
0407-467-025

Alex Waurich
alex@insitu.com.au
0408-185-469

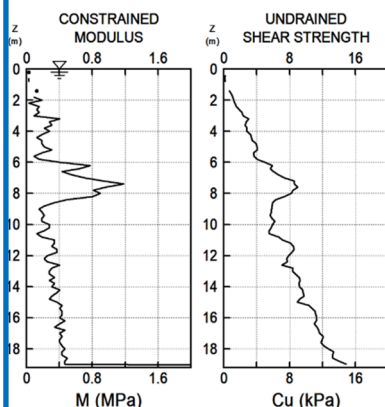
Wyn Binmore
wyn@insitu.com.au
0417-423-769

Allan McConnell (founder)
allan@insitu.com.au
0417-748-669



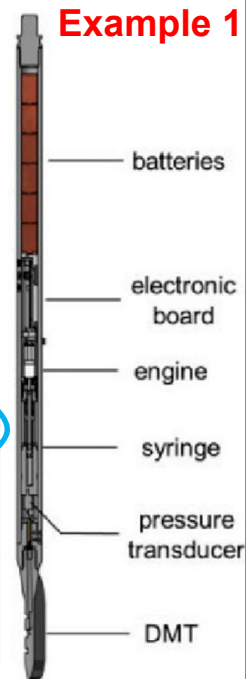
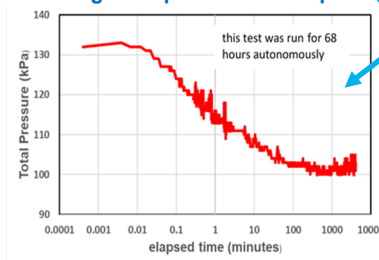
THE CUTTING EDGE MEDUSA DMT

The Medusa DMT is one of the greatest recent advances in geotechnical testing. It facilitates: (1) very high quality "normal" DMT testing; (2) testing in extremely soft materials; and (3) it permits cutting edge new tests – eg (a) very long term horizontal stress dissipations – (b) "continuous testing while penetrating" – (c) and research-level assessment of K_0 , the elusive earth pressure at rest.



example - modulus and shear strength of extremely soft stuff

example - 68hr σ_h dissipation in tailings - impossible in the past



IGS's SUPERB PPI SAMPLER

Example 2

The PPI Sampler – recognised as a world-best - was conceived and has evolved in-house by IGS. It rates in a similar quality-of-sample league as the very-expensive-to-use NGI mini-block-sampler.

This is confirmed by research at University of Newcastle and in correspondence by Dr Tom Lunne of Norwegian Geotechnical Institute.

In his keynote address to the CPT'22 Conference in Bologna, Dr Peter Robertson described the PPI (our words) as the best quality existing direct-push sampler – "the way to go".



high quality in situ testing
high quality sampling

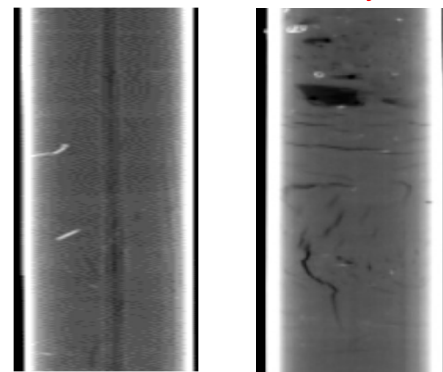
sampling at Ballina Test Site



CAT Scans of Ballina Samples

PPI – "undisturbed"

U75 Shelby Tube



reducing geotechnical uncertainty